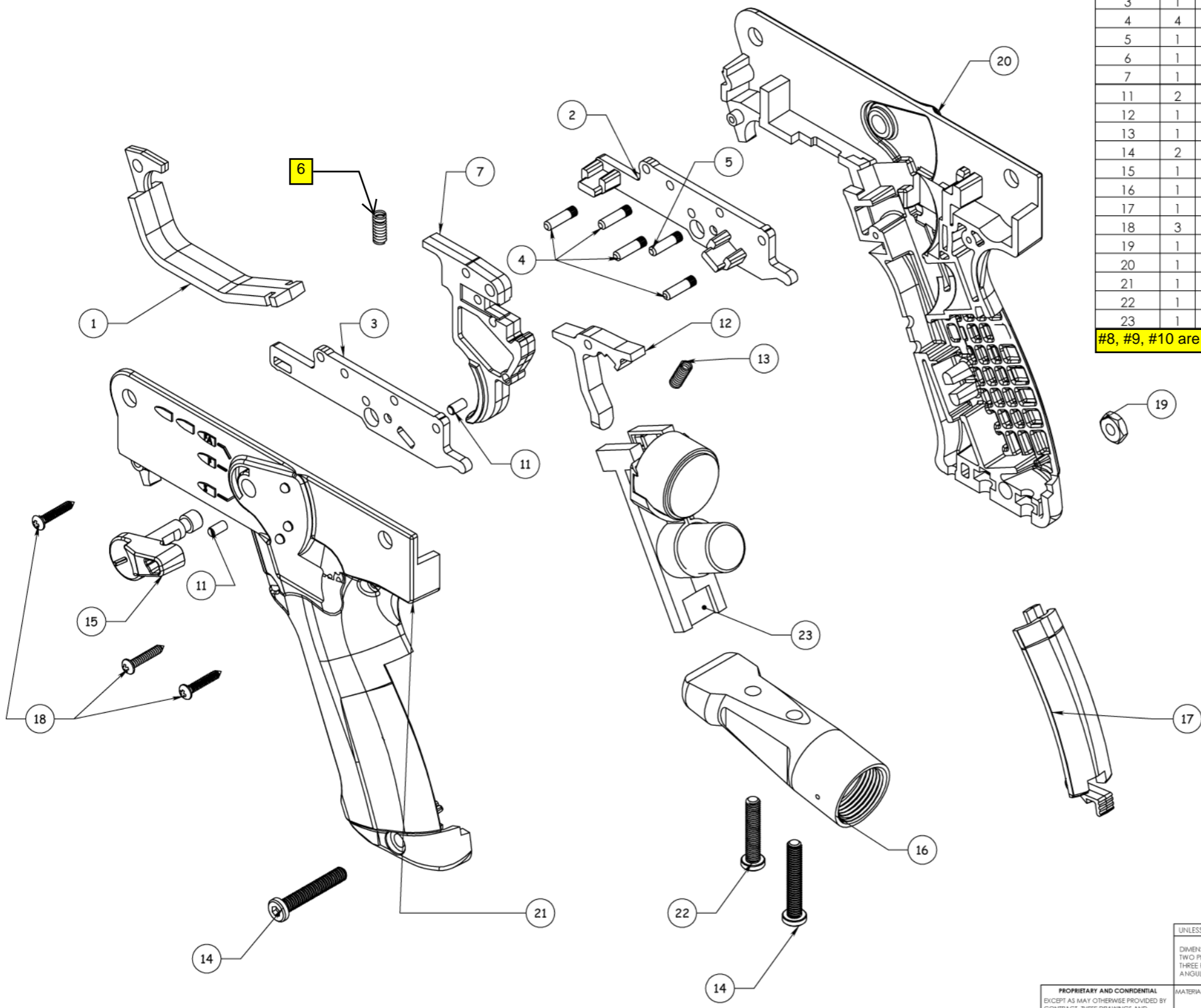


REVISIONS				
ZONE	REV	DISCRIPTION	DATE	APPROVED

ITEM NO.	QTY.	DRAWING NO.	GP NO.	DESCRIPTION
1	1	T4-066	02-38	TRIGGER GUARD, SINGLE
2	1	T4-071	02-67R	TRIGGER PLATE W/SPACERS, R
3	1	T4-070	02-67L	TRIGGER PLATE, L
4	4	T4-068	02-33	DOWEL PIN
5	1	T4-069	02-33A	DOWEL PIN, BLACK
6	1	T4-052	02-20S	COMP. SPRING
7	1	T15-005	TA10021	TRIGGER, SINGLE
11	2	T15-146	TA10072	MAGNET, TRIGGER/SAFETY
12	1	T15-132	TA10073	SEAR, X7 E-GRIP
13	1	T4-1053	02-88	COMP. SPRING 0.625FL-0.161O.D.
14	2	T2-032	98-01B	SCREW, 10-32 X 1.125", LSHCS
15	1	T4-1008	TA01022	SAFETY
16	1	T17-008	TA02061	TANK ADAPTER
17	1	T15-149	TA10066	BATTERY DOOR, X7 E-GRIP
18	3	T0-036	PL-42A	SCREW, #4X5/8 BLACK
19	1	T0-032	9-PA	NUT, HEX - BLACK
20	1	T4-1010-R	TA01019	LOWER RECEIVER, RIGHT, A-5 H.E-GRIP
21	1	T4-1010-L	TA01018	LOWER RECEIVER, LEFT, A-5 H.E-GRIP
22	1	T9-074	TA07074	BOLT
23	1	T15-Board	TA99500	X7 ELECTRONICS BOARD

#8, #9, #10 are not used on E-Grip Triggers



Yellow = Diagram Corrections  
Courtesy of TippmannParts.com

**PROPRIETARY AND CONFIDENTIAL**  
EXCEPT AS MAY OTHERWISE PROVIDED BY CONTRACT, THESE DRAWINGS AND SPECIFICATIONS ARE THE PROPERTY OF TIPPMANN PNEUMATICS INC., AND ARE ISSUED IN STRICT CONFIDENCE AND SHALL NOT BE REPRODUCED, OR COPIED, OR USED AS THE BASIS FOR MANUFACTURE OR SALE OF APPARATUS WITHOUT PERMISSION.

UNLESS OTHERWISE SPECIFIED:  
DIMENSIONS ARE IN INCHES  
TWO PLACE DECIMAL ±.010  
THREE PLACE DECIMAL ±.005  
ANGULAR ±1/2°

MATERIAL:  
FINISH:  
DO NOT SCALE DRAWING

DRAWN	NAME	DATE
CHECKED		
ENG APPR.		
MFG APPR.		
WHERE USED:		
PART NO:		

**TIPPMANN**  
SPORTS LLC  
2905 ADAMS CENTER RD. PHONE: 260-749-6022  
FT. WAYNE INDIANA 46803 FAX: 260-749-6610

TITLE:  
**A-5 H.E-GRIP KIT**

SIZE: DWG. NO. REV  
**C T4-HEG**

SCALE: 1:4 WEIGHT: SHEET 1 OF 1